

APPENDIX B

MISCELLANEOUS FEES

1. CONNECTION FEE

A baseline Connection Fee of two thousand five hundred thirty dollars (\$2,530.00) per equivalent dwelling unit (“EDU”), will be assessed for all new connections to the Sewage Disposal System, except for certain customers in northwest Shelby County, as described below. A new connection includes new sewer service or modification of an existing sewer service agreement; however, replacement or repair of an existing individual Building Sewer that does not increase EDU’s will not constitute a new connection. EDU’s shall be determined in accordance with industry standards and reflect the greater of the actual daily flow requirements (per 327 IAC 3), the area ratio of the water meter size serving a particular user, or such other means of determination deemed appropriate by the Utility. One (1) EDU shall be estimated as equal to three hundred ten (310) gallons per day.

Notwithstanding the foregoing, connection fees will not be assessed to Residential Customers, whose homes were in existence as of January 14, 2022, within the boundaries established by the Certificate of Territorial Authority filing approved in Cause No. 45628, for a period that extends through May 4, 2037, and for all other customers within the boundaries of the Northwest Shelby County Tax Increment Financing District, through March 1, 2032. See the map that is part of this Appendix B for information related to these boundaries.

2. EXTENSION, AMENDMENT, OR TRANSFER OF AUTHORITY TO CONNECT TO THE SEWAGE DISPOSAL SYSTEM

The fee for extending the authority granted by the Utility to connect to the Sewage Disposal System beyond 180 days shall be \$30. The fee for amending an application for connection shall be \$30. The fee for transferring the authority granted by the Utility to connect to the Sewage Disposal System, which transfer must be done with the consent of the Utility shall be \$30.

3. BUILDING SEWER FEES

The Utility shall bill the following fees when a Building Sewer permit is required to construct, repair, modify, connect or abandon any Sanitary Sewer Facility within the Utility’s service area. The fees are as follows:

3.1 Building Sewer Application and Permit Fee: A fee of \$209 will be assessed for the application and issuance of a Building Sewer permit.

3.2 Building Sewer Re-Inspection Fee: In the event a Building Sewer fails the initial inspection, a fee of \$75 will be assessed for each additional inspection.

APPROVED BY
CONFERENCE MINUTES
30-Day Filing No. 50594
November 2, 2022
INDIANA UTILITY REGULATORY COMMISSION

4. **SANITARY SEWER FACILITY FEES**

The Utility shall bill the following fees when a Sanitary Sewer Facility permit is required to construct, repair, modify, connect or abandon any Sanitary Sewer Facility within the Utility's service area. The fees are as follows:

4.1 Sanitary Sewer Facility Application, Initial Plan and Construction Review Fee: A fee of \$657 will be assessed for the initial application, plan submission and review.

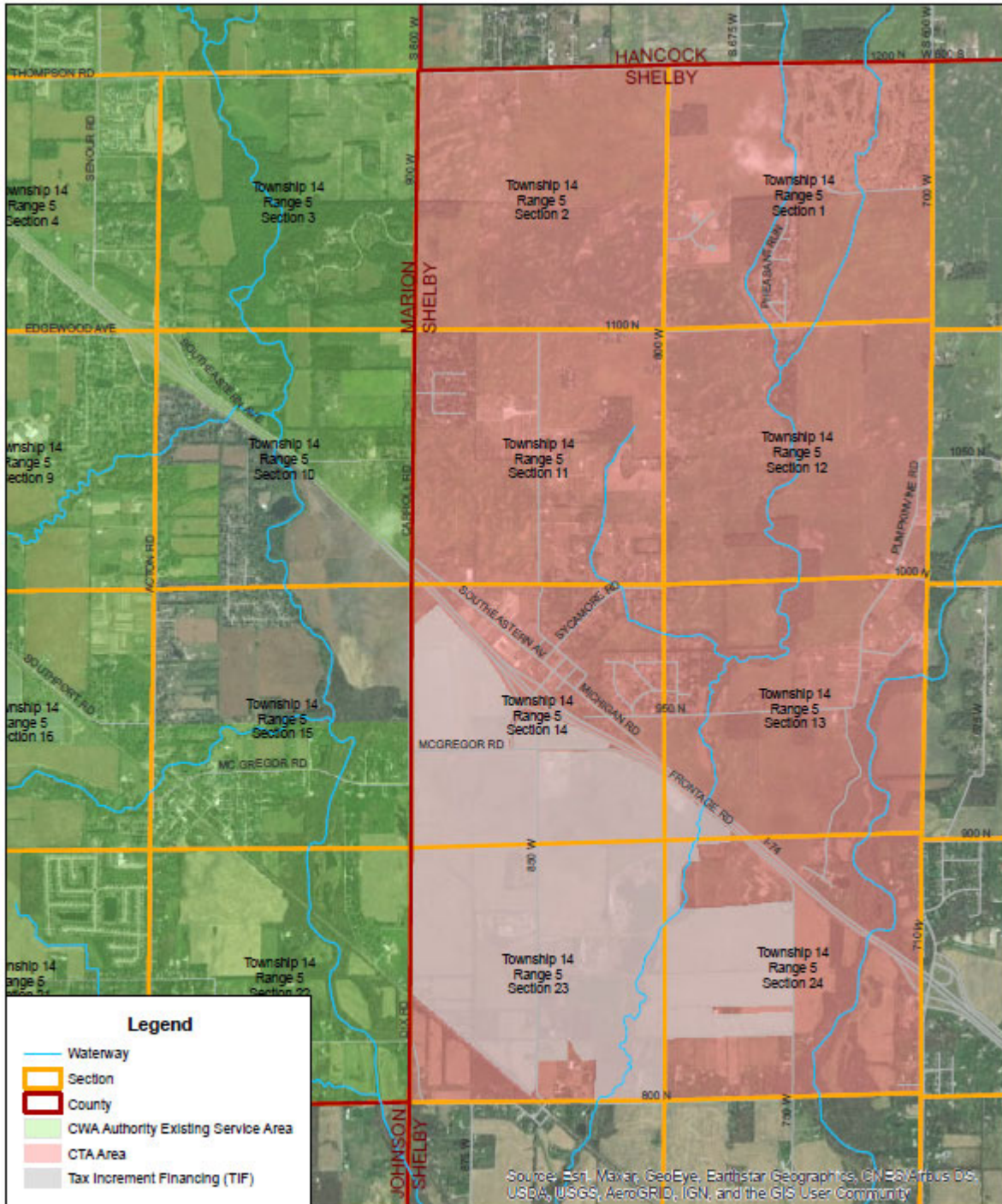
4.2 Sanitary Sewer Facility Additional Plan Review Fee: A fee of \$247 will be assessed for each additional revised plan submission and subsequent review.

4.3 Sanitary Sewer Facility Construction Management Fee: A fee of \$420 will be assessed at the time the application is made for a Sanitary Sewer Facility permit for the management of construction scheduling, close out, and post construction record retention.

4.4 Sanitary Sewer Facility Construction Inspection Services Fee: A fee of \$65 per hour will be assessed for construction inspection services provided throughout all work and construction performed on or associated with the Sanitary Sewer Facility.

APPROVED BY
CONFERENCE MINUTES
30-Day Filing No. 50594
November 2, 2022

INDIANA UTILITY REGULATORY COMMISSION



CWA Authority
CTA Area Expansion

